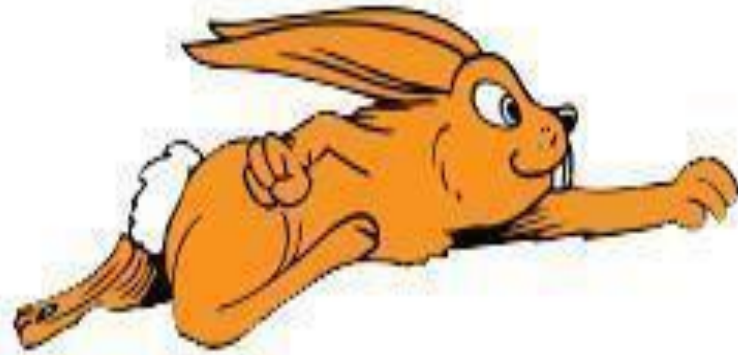




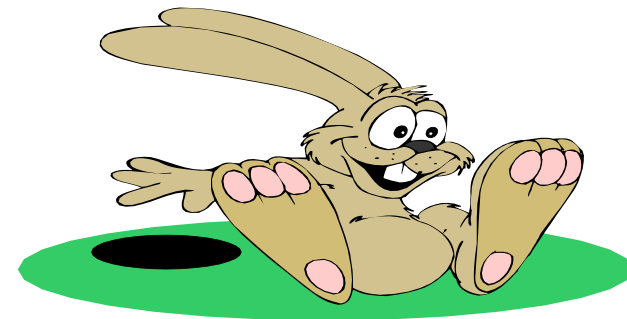
Welcome  
to  
Mary F. Janvier Elementary School

2018 - 2019



# Mary F. Janvier Elementary School

- 578 School Enrollment
- 49 Instructional Staff Total (Traditional, Basic Skills, and Resource)
- Curriculum - Language Arts, Math, Social Studies, Science, Health, World Cultures, Computers, Phys. Ed, Art, Library, Music
- School Hours – 9:12am-3:57pm



# The School Day

- Bus Arrival – approx. 9:07am
- Students enter Janvier – 9:12am
- Students guided to their classrooms / opening activities
- 30 minute lunch period ( \$2.95 - reg., \$.40 - reduced)
- Recess (20 minutes), Rest, and Snack Time
- Student Dismissal – 3:57pm
- Bus Departure – approx. 4:07pm
- Bus stop – Parent / Care-Giver must be present



# Attendance **Hotline**

- 629 - 9500 press 2 - Janvier then 5 – attendance  
629 – 0431 press 5 - attendance
- Please call before 8:00am
- Absent / Late Notes (5 unex. = 1 unex. absence)
- Dr.'s Notes – Submitted within 10 days of return
- Excessive Absences (12 unex. = loss of extras)
- Pick – up Note Very Important



# Student Safety

- Required Safety Plan Exists
- Fire Drills
- Security Drills
- Security Upgrades

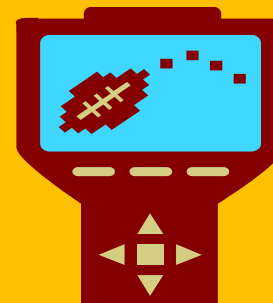
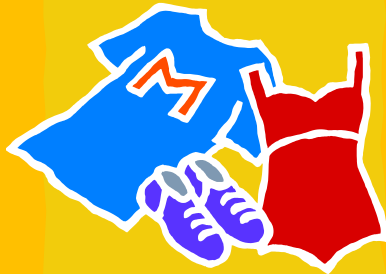


- Parental Cooperation
- Parent Sign-in
- Visitor Badges
- Student pick-up...side parking lot (3:40)
- AM drop – side lot parking (9:12am)



# Some More Policies

- Dress code – flip flops, bare back, tank tops, high heels, etc....cause problems and injuries
- Toys – only for classroom “Rainy Day Boxes”
- Cell Phones – request to leave at home...young children lose them
- Electronic Games – not to be brought to school



# Harassment, Intimidation, Bullying

- Promptly Addressed
- Compliant with State Mandated Requirements
  - ✓ School Specialist - School Counselor
  - ✓ Investigative Process
  - ✓ Timeline Adherence
- Communication a Priority
  - ✓ Proactive Approach
  - ✓ Appropriate Response
  - ✓ Additional Reporting Information – Web Site

# Food Items



- Nutrition Guidelines
- Birthdays – Cafeteria Service, Teacher Notification 5 Days in Advance
- School Celebrations – School Party Menu
- Allergies
- Breakfast Program





# Relationships

- Chain of Command
- Proactive Communication
- Website, Parent Portal, Facebook, Twitter, Email, etc....
- [www.franklintwpschools.org](http://www.franklintwpschools.org)
- Discipline Procedures
- Involvement
- Back to School Night – Sept. 17<sup>th</sup>

